

A46 Newark Bypass

TR010065/APP/2.13

2.13 Tree Protection Plans Part 2

APFP Regulation 5(2)(a)

Planning Act 2008

Infrastructure Planning (Applications: Prescribed Forms and
Procedure) Regulations 2009

Volume 2

April 2024

Infrastructure Planning

Planning Act 2008

**The Infrastructure Planning
(Applications: Prescribed Forms
and Procedure) Regulations 2009**

A46 Newark Bypass

Development Consent Order 202[x]

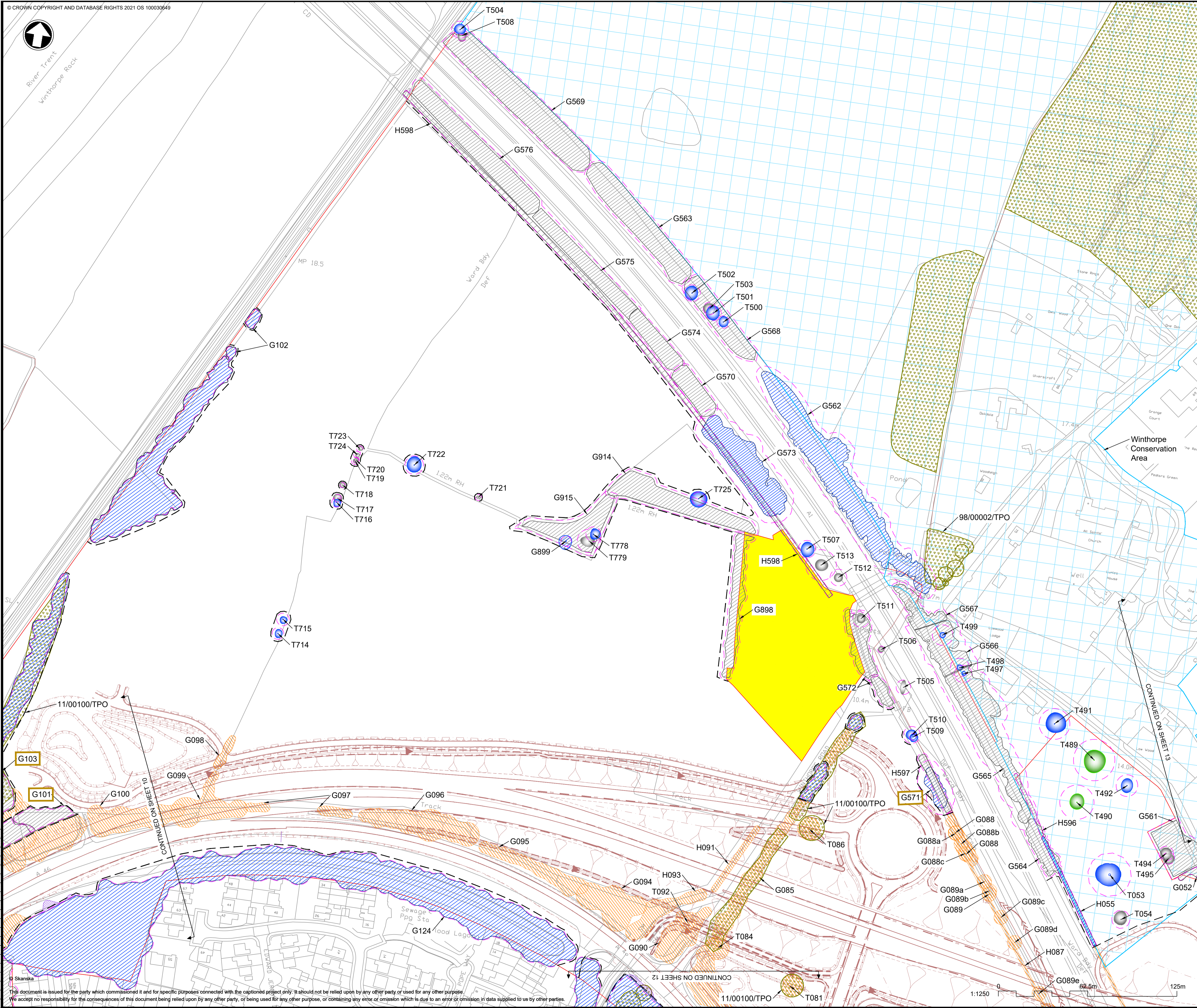
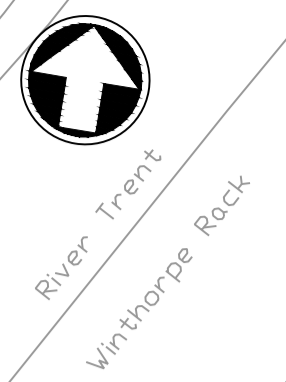
Tree Protection Plans – Part 2

Regulation Number:	Regulation 5(2)(a)
Planning Inspectorate Scheme Reference	TR010065
Application Document Reference	TR010065/APP/2.13
Author:	A46 Newark Bypass Project Team, National Highways

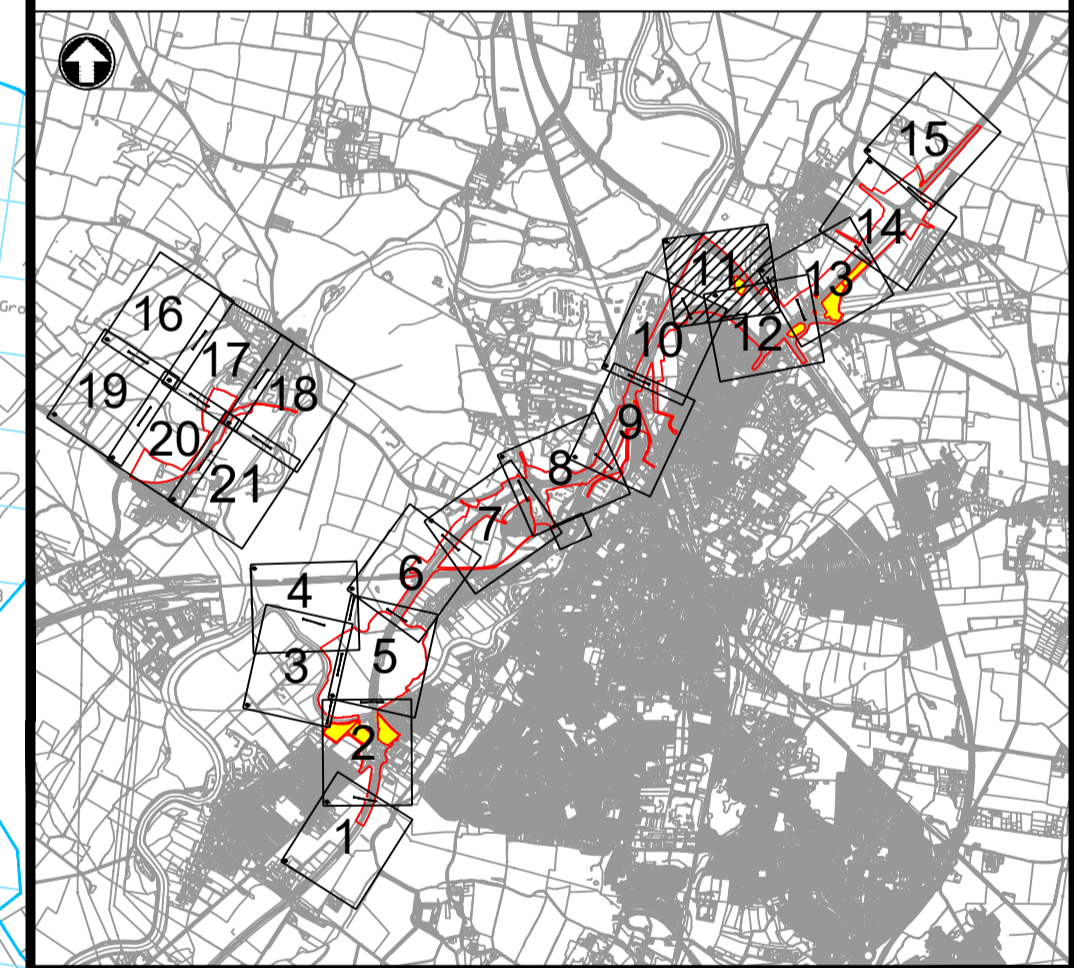
Version	Date	Status of Version
Rev 1	April 2024	DCO Application

This document is a duplicate of the tree protection plans provided as Appendix E.2 of Appendix 7.4 (Arboricultural Impact Assessment) of the ES Appendices (TR010065/APP/6.3).

Sheets 11-21.



- NOTES**
1. Do not scale from this drawing.
 2. Dimensions are in metres unless stated otherwise.
 3. Arboricultural key symbols are shown on drawing: HE551478-SKAG-ELS-CONWI_CONW-DR-LS-30200.
 4. To be read in conjunction with the Arboricultural Impact Assessment (TR010065/APP/6.3), the Environmental Statement (TR010065/APP/6.1) and the Draft DCO (TR010065/APP/3.1).



C01	15/02/24	DCO APPLICATION	DL	RL	HF
REV.	DATE	AMENDMENT DETAILS	ORIG	CHK'D	APP'D

CLIENT
 national highways

PURPOSE OF ISSUE
 DCO APPLICATION

DEVELOPMENT CONSENT ORDER NUMBER
 TR010065

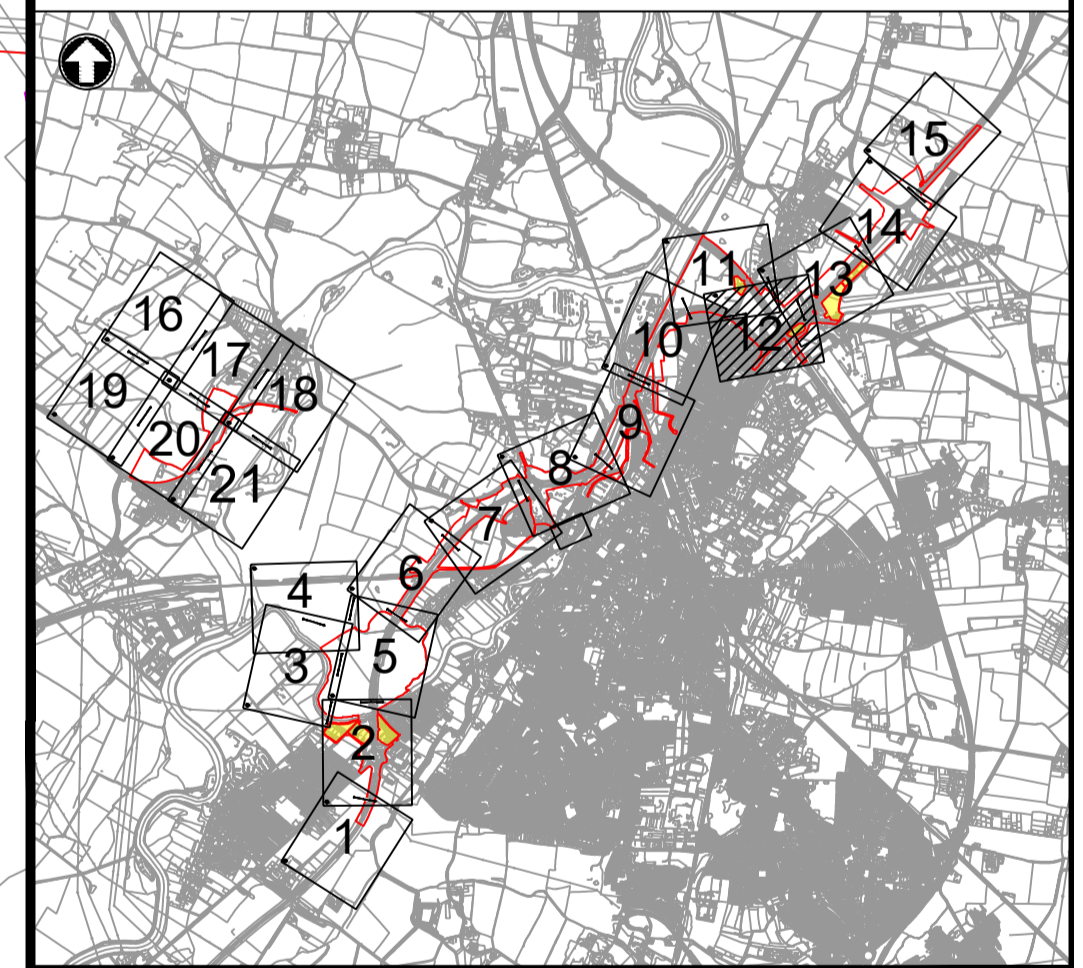
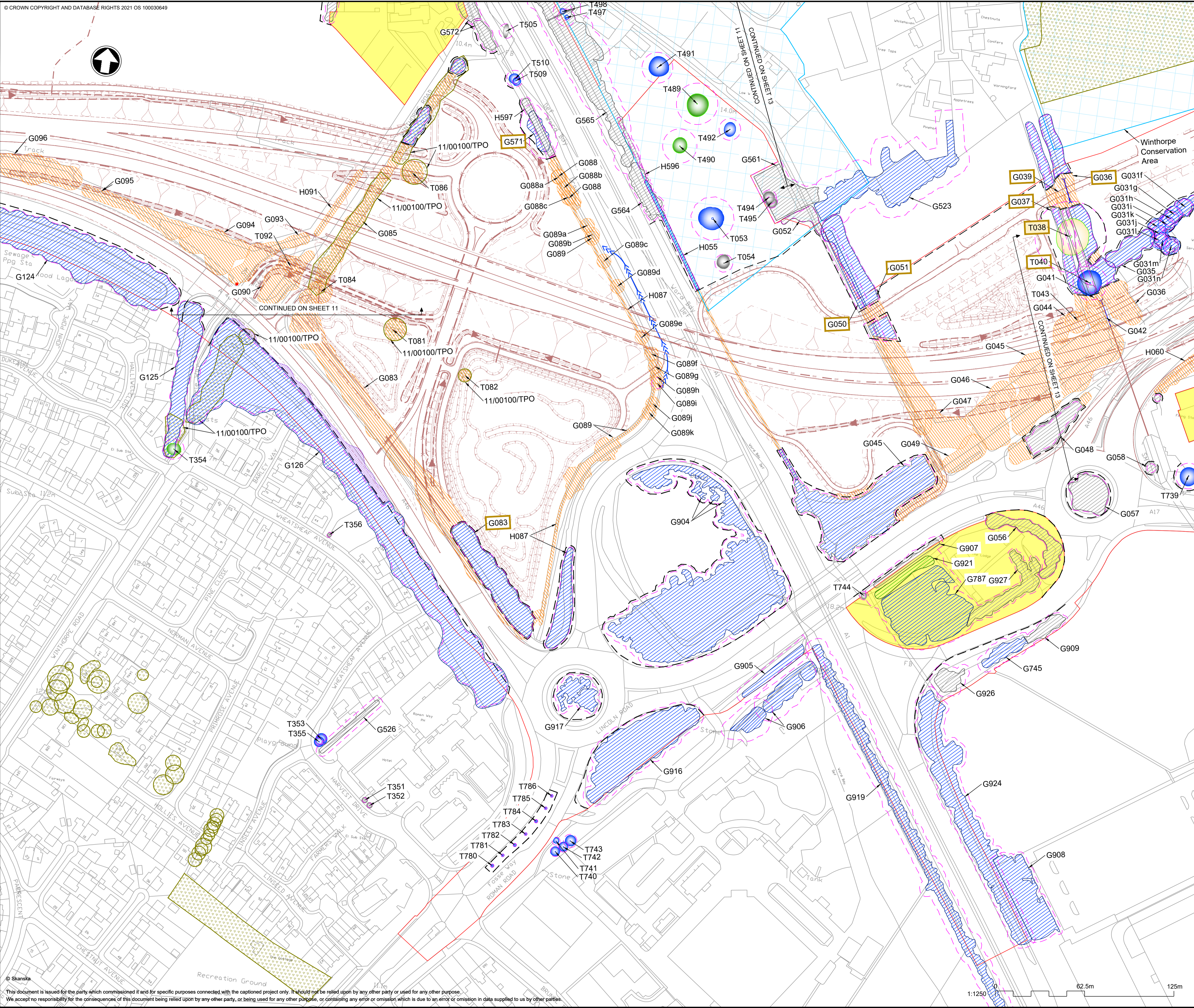
PROJECT TITLE
 A46 NEWARK BYPASS

DRAWING TITLE
 Appendix E.2
 Tree Protection Plan
 Sheet 11 of 21

ORIGINAL SIZE	A1	SCALE	1:1250
---------------	----	-------	--------

DRAWING NUMBER	ORIGINATOR	VOLUME	PROJECT REF NO.
HE551478	SKAG	ELS	HE551478
CONWI_CONW	DR	LS	REVISION
LOCATION	TYPE	ROLE	NUMBER
			C01

- NOTES
1. Do not scale from this drawing.
 2. Dimensions are in metres unless stated otherwise.
 3. Arboricultural key symbols are shown on drawing: HE551478-SKAG-ELS-CONWI_CONW-DR-LS-30200.
 4. To be read in conjunction with the Arboricultural Impact Assessment (TR010065/APP/6.3), the Environmental Statement (TR010065/APP/6.1) and the Draft DCO (TR010065/APP/3.1).



C01	15/02/24	DCO APPLICATION	DL	RL	HF
REV.	DATE	AMENDMENT DETAILS	ORIG	CHK'D	APP'D

CLIENT
 national highways

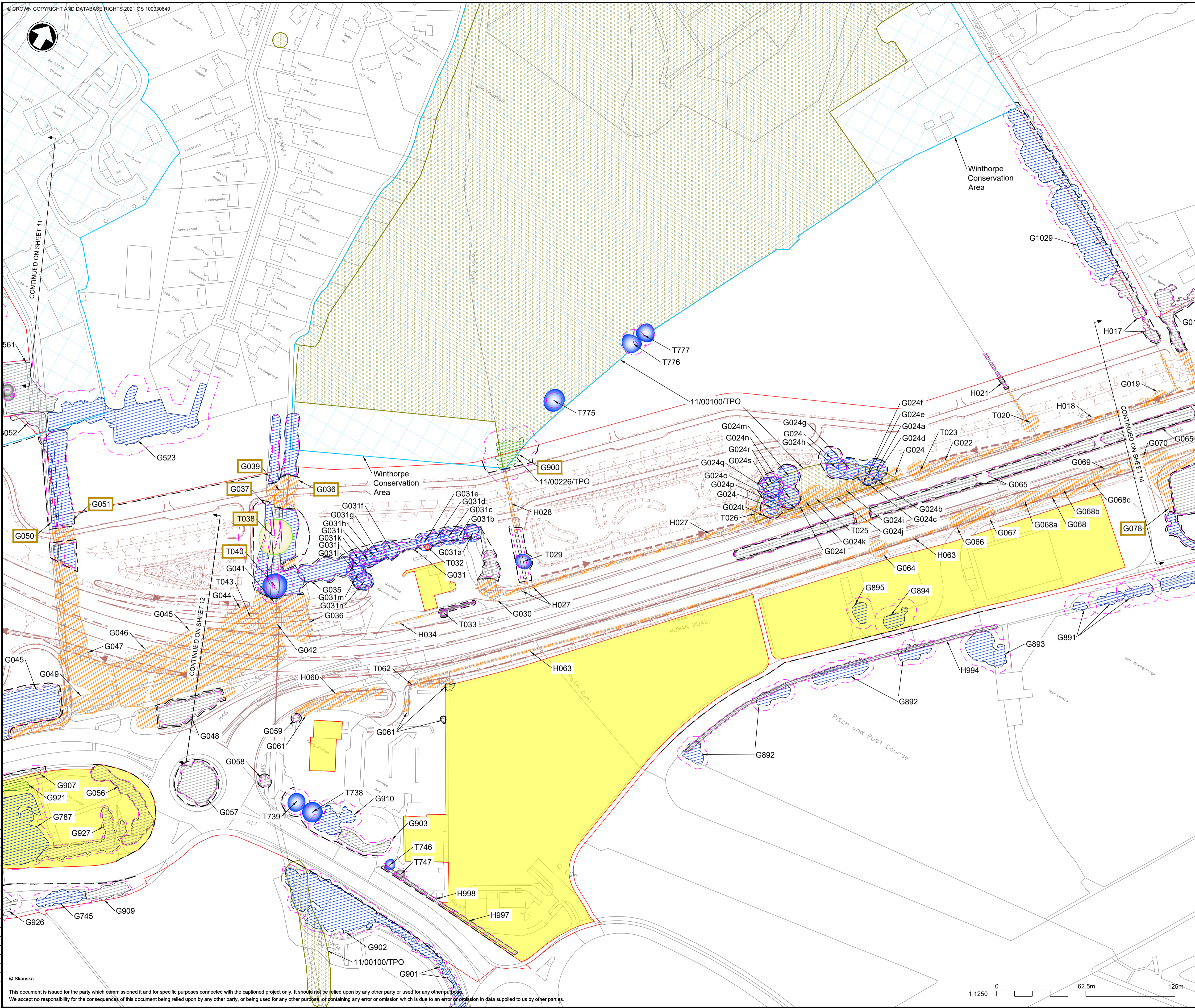
PURPOSE OF ISSUE
 DCO APPLICATION

DEVELOPMENT CONSENT ORDER NUMBER
 TR010065

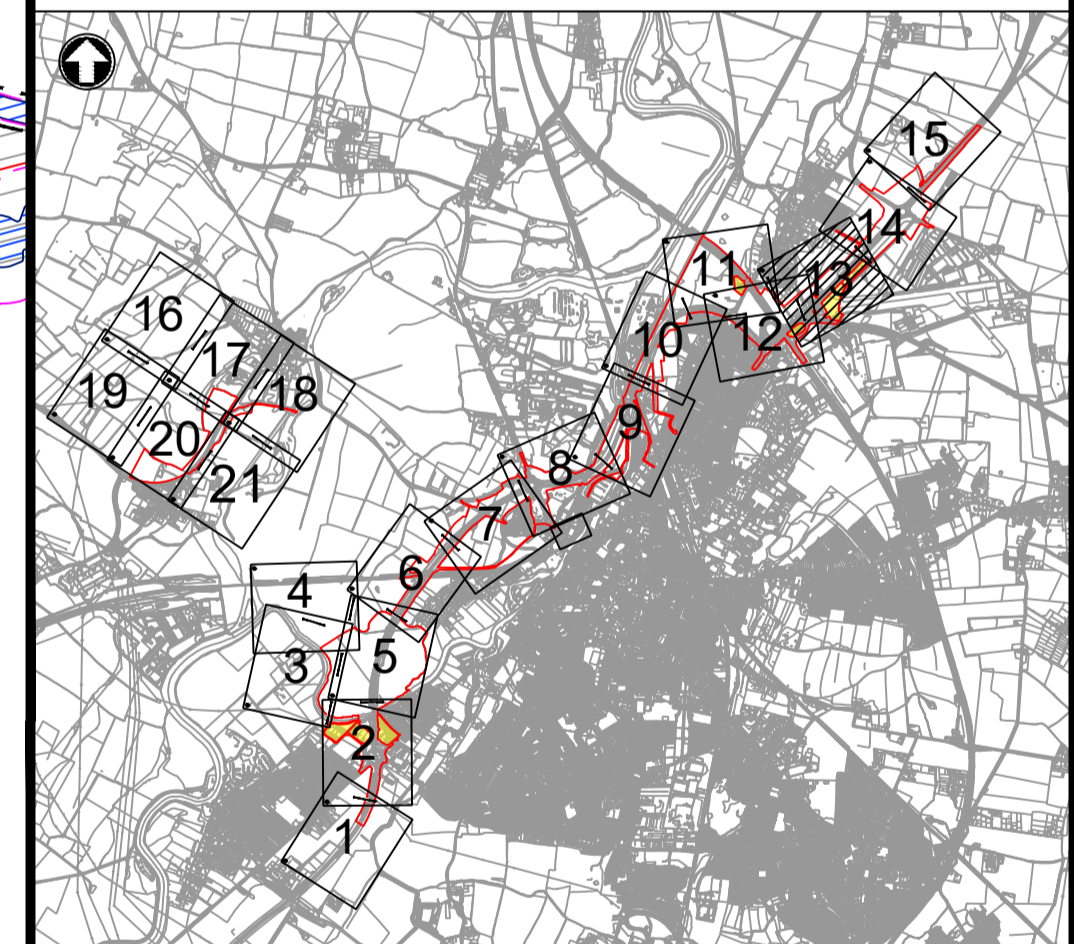
PROJECT TITLE
 A46 NEWARK BYPASS

DRAWING TITLE
 Appendix E.2
 Tree Protection Plan
 Sheet 12 of 21

ORIGINAL SIZE	A1	SCALE	1:1250
DRAWING NUMBER	HE551478	ORIGINATOR	SKAG
HE PIN	HE551478	VOLUME	ELS
CONWI_CONW	DR	LS	30212
LOCATION	DR	ROLE	NUMBER
			C01



- NOTES**
1. Do not scale from this drawing.
 2. Dimensions are in metres unless stated otherwise.
 3. Arboricultural key symbols are shown on drawing: HE551478-SKAG-ELS-CONWI_CONW-DR-LS-30200.
 4. To be read in conjunction with the Arboricultural Impact Assessment (TR010065/APP/6.3), the Environmental Statement (TR010065/APP/6.1) and the Draft DCO (TR010065/APP/3.1).



REV.	DATE	DCO APPLICATION	DL	RL	HF
		AMENDMENT DETAILS	ORIG	CHK'D	APP'D

CLIENT
 national highways

PURPOSE OF ISSUE
 DCO APPLICATION

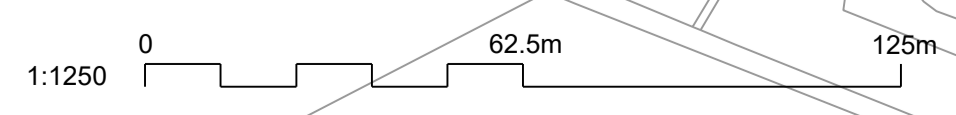
DEVELOPMENT CONSENT ORDER NUMBER
 TR010065

PROJECT TITLE
 A46 NEWARK BYPASS

DRAWING TITLE
 Appendix E.2
 Tree Protection Plan
 Sheet 13 of 21

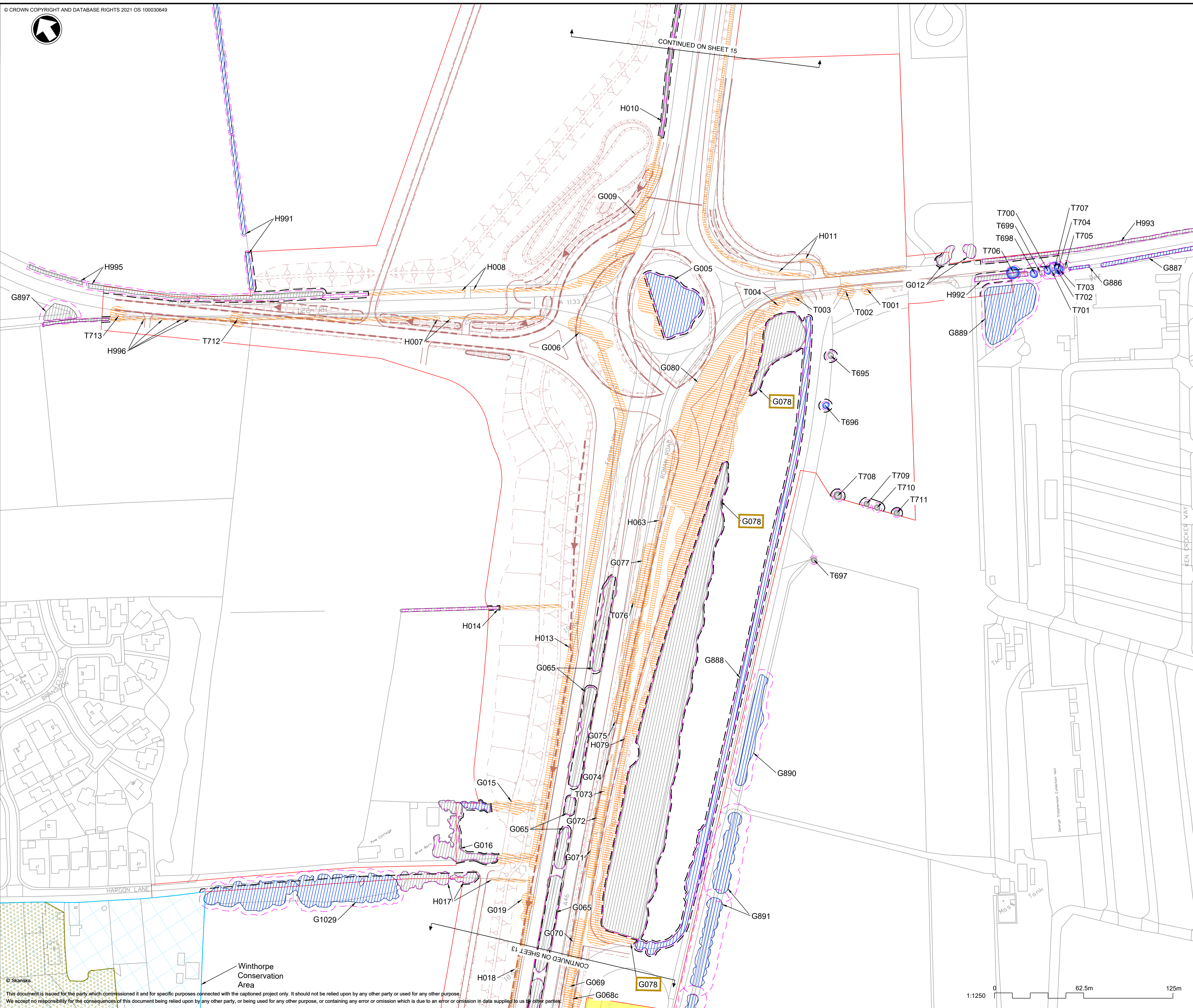
ORIGINAL SIZE	A1	SCALE	1:1250
---------------	----	-------	--------

DRAWING NUMBER	ORIGINATOR	VOLUME	PROJECT REF NO.
HE551478	SKAG	ELS	HE551478
CONWI_CONW	DR	LS	REVISION
LOCATION	TYPE	ROLE	NUMBER
			C01





CONTINUED ON SHEET 15



NOTES

- Do not scale from this drawing.
- Dimensions are in metres unless stated otherwise.
- Arboricultural key symbols are shown on drawing: HE551478-SKAG-ELS-CONWI_CONW-DR-LS-30200.
- To be read in conjunction with the Arboricultural Impact Assessment (TR010065/APP/6.3), the Environmental Statement (TR010065/APP/6.1) and the Draft DCO (TR010065/APP/3.1).

C01	15/02/24	DCO APPLICATION	DL	RL	HF
REV.	DATE	AMENDMENT DETAILS	ORIG	CHK'D	APP'D

CLIENT

PURPOSE OF ISSUE: DCO APPLICATION

DEVELOPMENT CONSENT ORDER NUMBER: TR010065

PROJECT TITLE: A46 NEWARK BYPASS

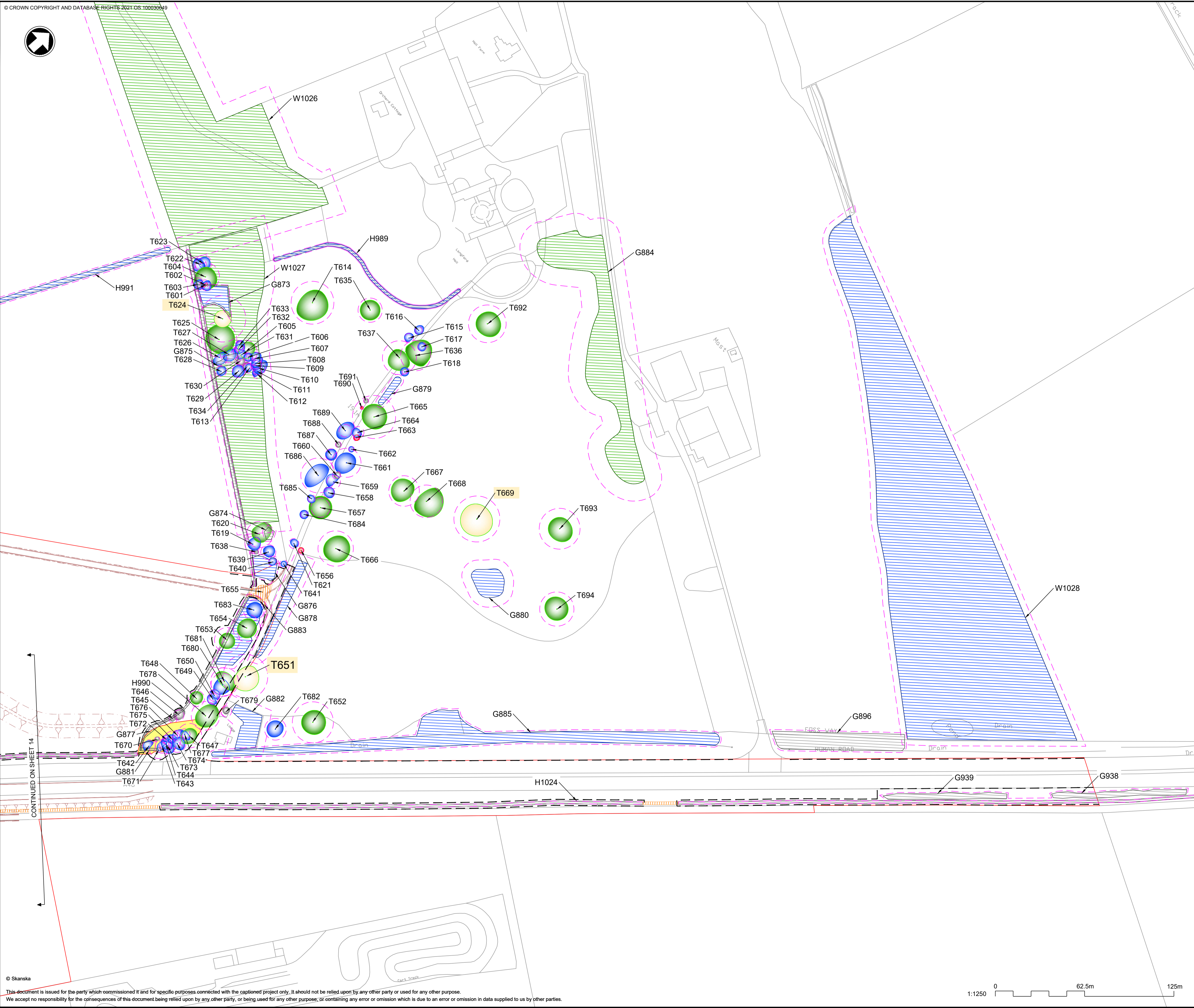
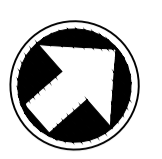
DRAWING TITLE: Appendix E.2 Tree Protection Plan Sheet 14 of 21

ORIGINAL SIZE	A1	SCALE	1:1250
---------------	----	-------	--------

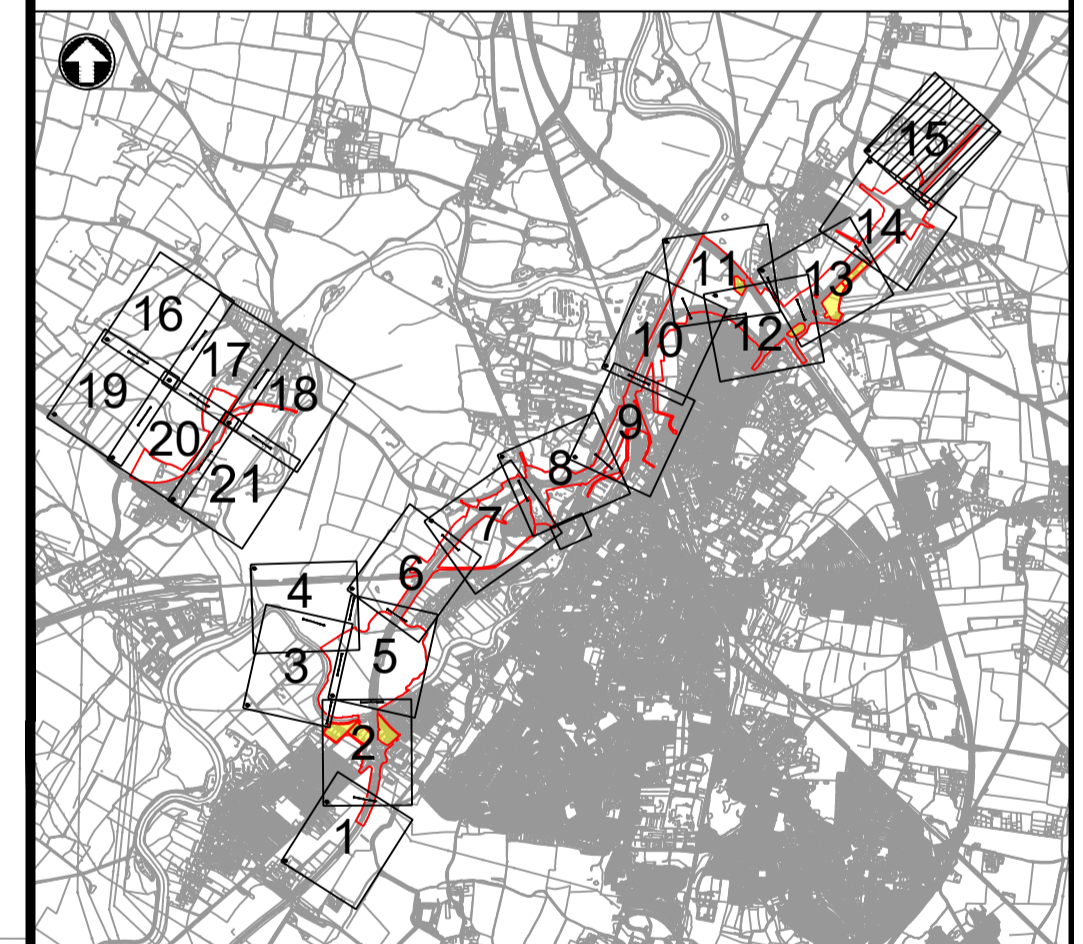
DRAWING NUMBER	HE551478	ORIGINATOR	SKAG	VOLUME	ELS	PROJECT REF NO.	HE551478
CONWI_CONW	DR	LS	30214	NUMBER	C01	REVISION	

© Skanska

This document is issued for the party which commissioned it and for specific purposes connected with the captioned project only. It should not be relied upon by any other party or used for any other purpose. We accept no responsibility for the consequences of this document being relied upon by any other party, or being used for any other purpose, or containing any error or omission which is due to an error or omission in data supplied to us by other parties.



- NOTES**
1. Do not scale from this drawing.
 2. Dimensions are in metres unless stated otherwise.
 3. Arboricultural key symbols are shown on drawing: HE551478-SKAG-ELS-CONWI_CONW-DR-LS-30200.
 4. To be read in conjunction with the Arboricultural Impact Assessment (TR010065/APP/6.3), the Environmental Statement (TR010065/APP/6.1) and the Draft DCO (TR010065/APP/3.1).



REV. C01	DATE 15/02/24	DCO APPLICATION	DL	RL	HF
REV.	DATE	AMENDMENT DETAILS	ORIG	CHK'D	APP'D

CLIENT

PURPOSE OF ISSUE
DCO APPLICATION

DEVELOPMENT CONSENT ORDER NUMBER
TR010065

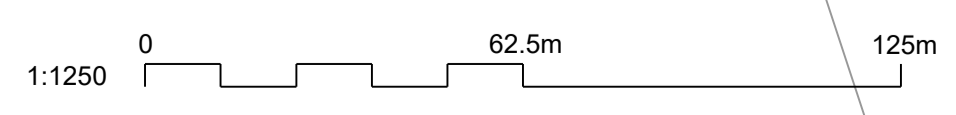
PROJECT TITLE
A46 NEWARK BYPASS

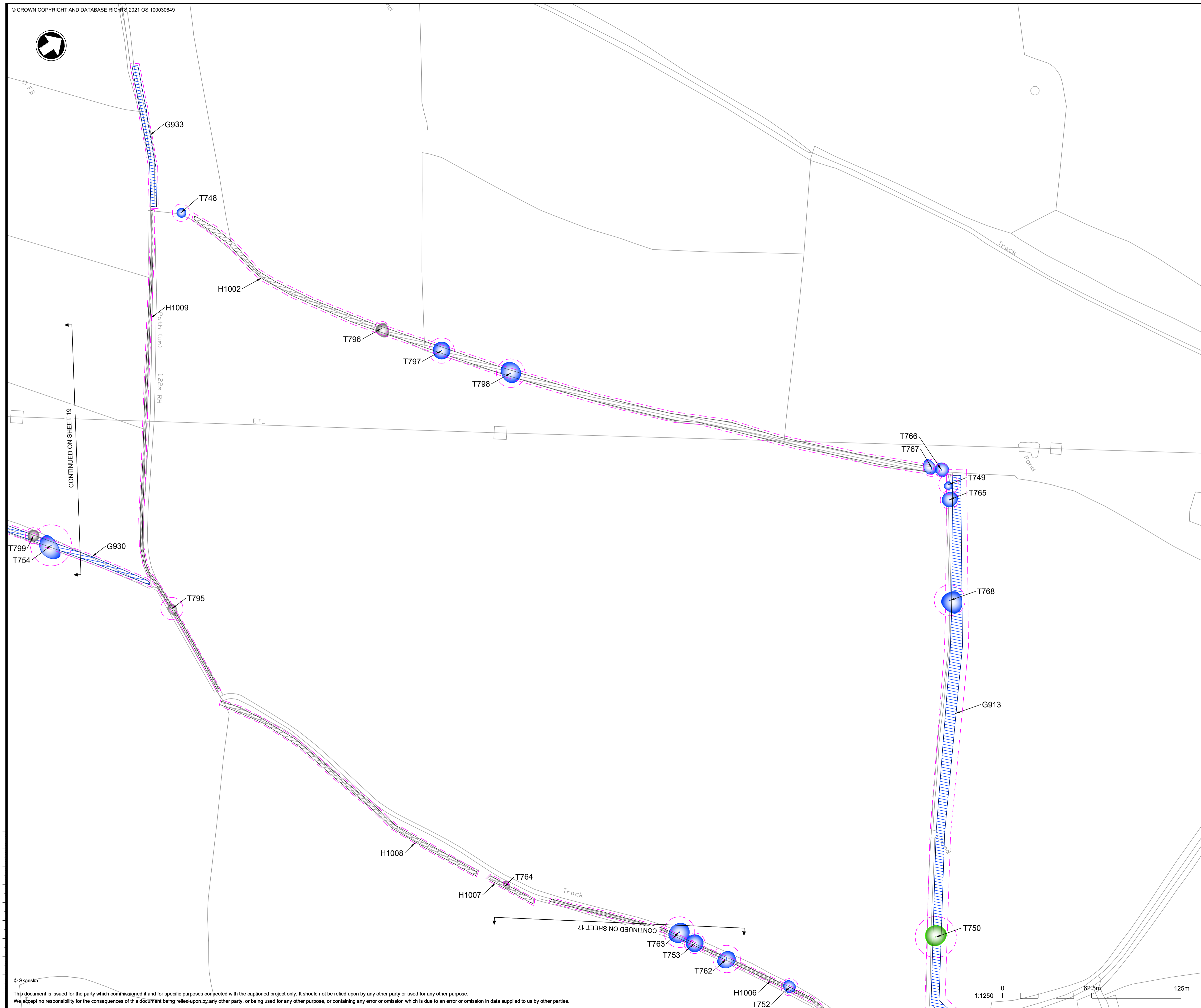
DRAWING TITLE
Appendix E.2
Tree Protection Plan
Sheet 15 of 21

ORIGINAL SIZE	A1	SCALE	1:1250
DRAWING NUMBER	HE551478	ORIGINATOR	SKAG
HE PIN	ELS	VOLUME	30215
CONWI_CONW	DR	LS	30215
LOCATION	TYPE	ROLE	NUMBER

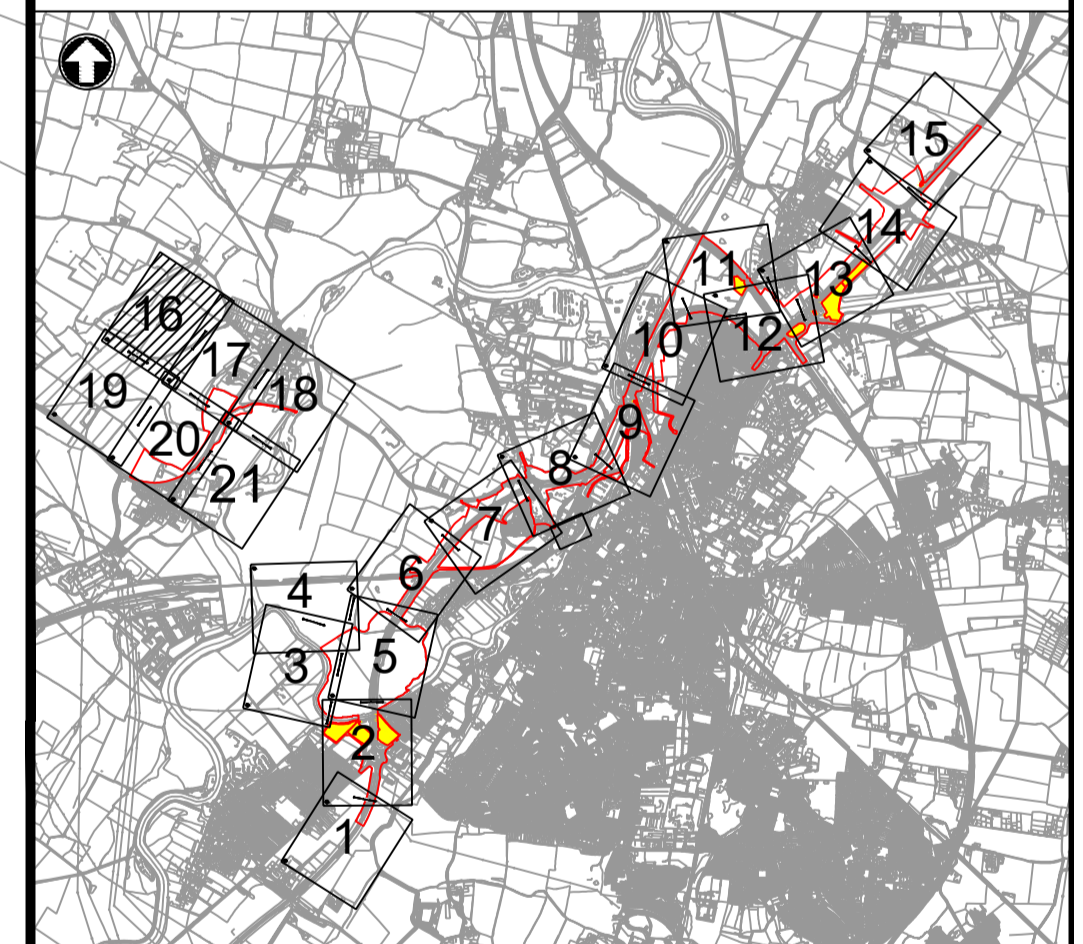
PROJECT REF NO.
HE551478

REVISION
C01





- NOTES**
1. Do not scale from this drawing.
 2. Dimensions are in metres unless stated otherwise.
 3. Arboricultural key symbols are shown on drawing: HE551478-SKAG-ELS-CONWI_CONW-DR-LS-30200.
 4. To be read in conjunction with the Arboricultural Impact Assessment (TR010065/APP/6.3), the Environmental Statement (TR010065/APP/6.1) and the Draft DCO (TR010065/APP/3.1).



C01	15/02/24	DCO APPLICATION	DL	RL	HF
REV.	DATE	AMENDMENT DETAILS	ORIG	CHK'D	APP'D

CLIENT
 national highways

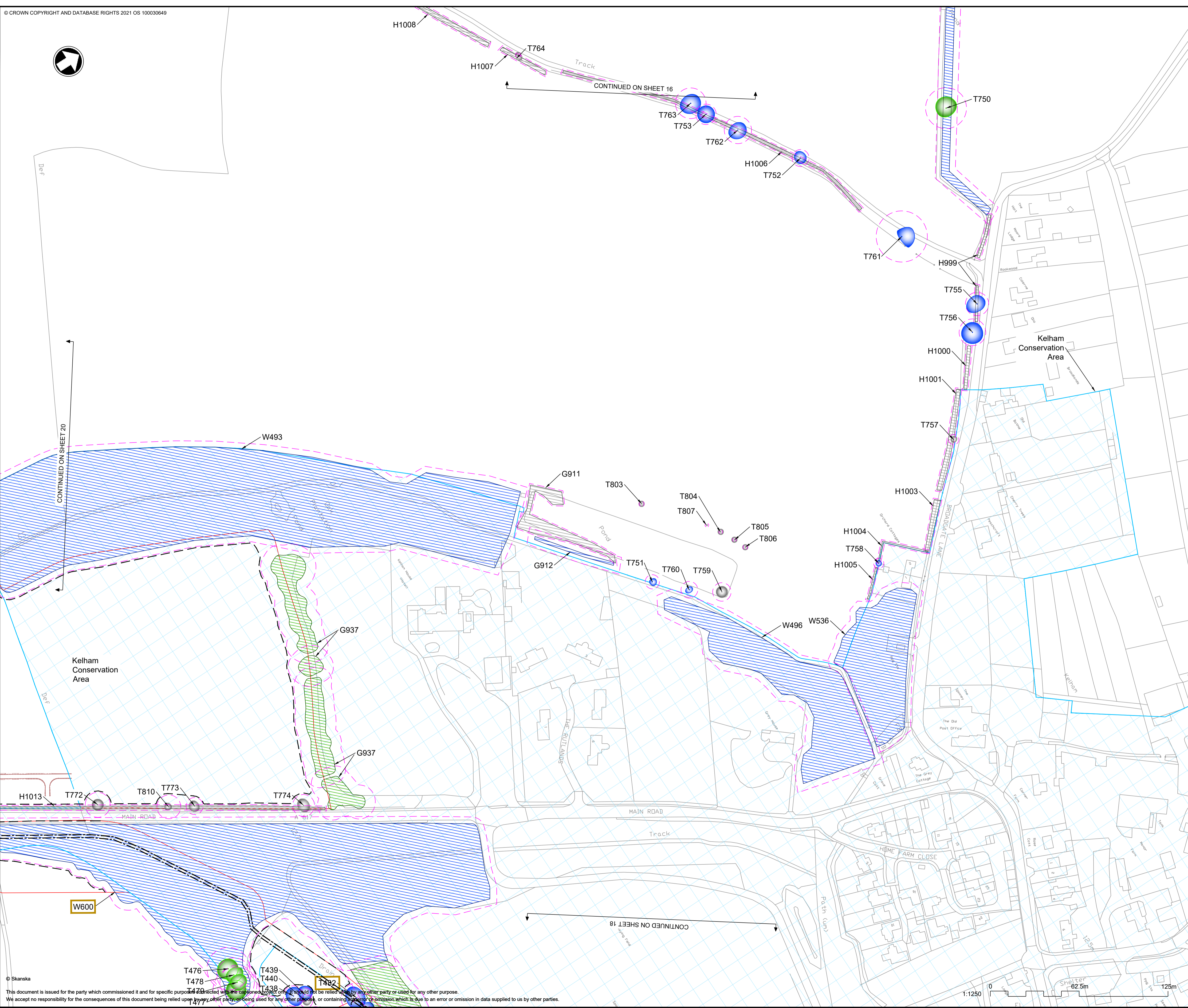
PURPOSE OF ISSUE
 DCO APPLICATION

DEVELOPMENT CONSENT ORDER NUMBER
 TR010065

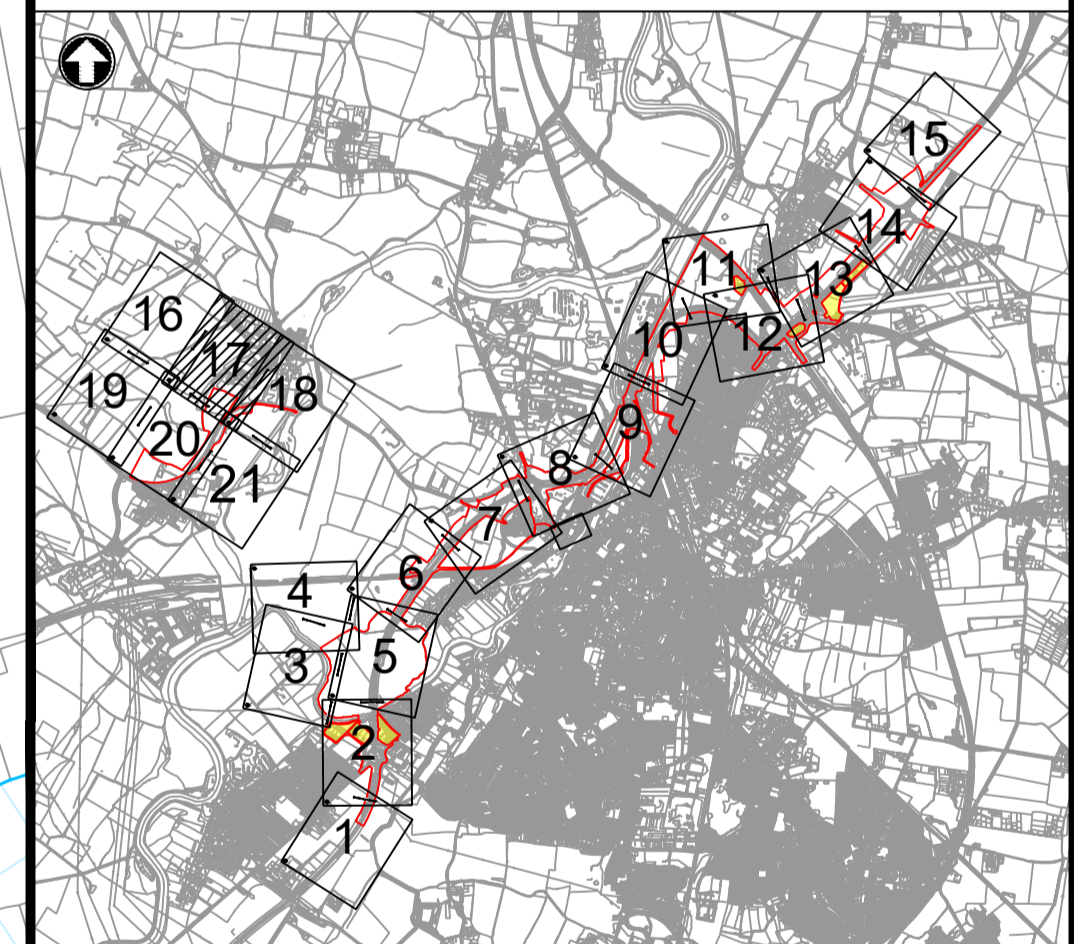
PROJECT TITLE
 A46 NEWARK BYPASS

DRAWING TITLE
 Appendix E.2
 Tree Protection Plan
 Sheet 16 of 21

ORIGINAL SIZE	A1	SCALE	1:1250	PROJECT REF NO.	HE551478
DRAWING NUMBER	HE551478	ORIGINATOR	SKAG	VOLUME	ELS
CONWI_CONW	DR	LS	30216	REVISION	C01
LOCATION	TYPE	ROLE	NUMBER		

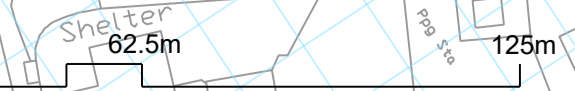


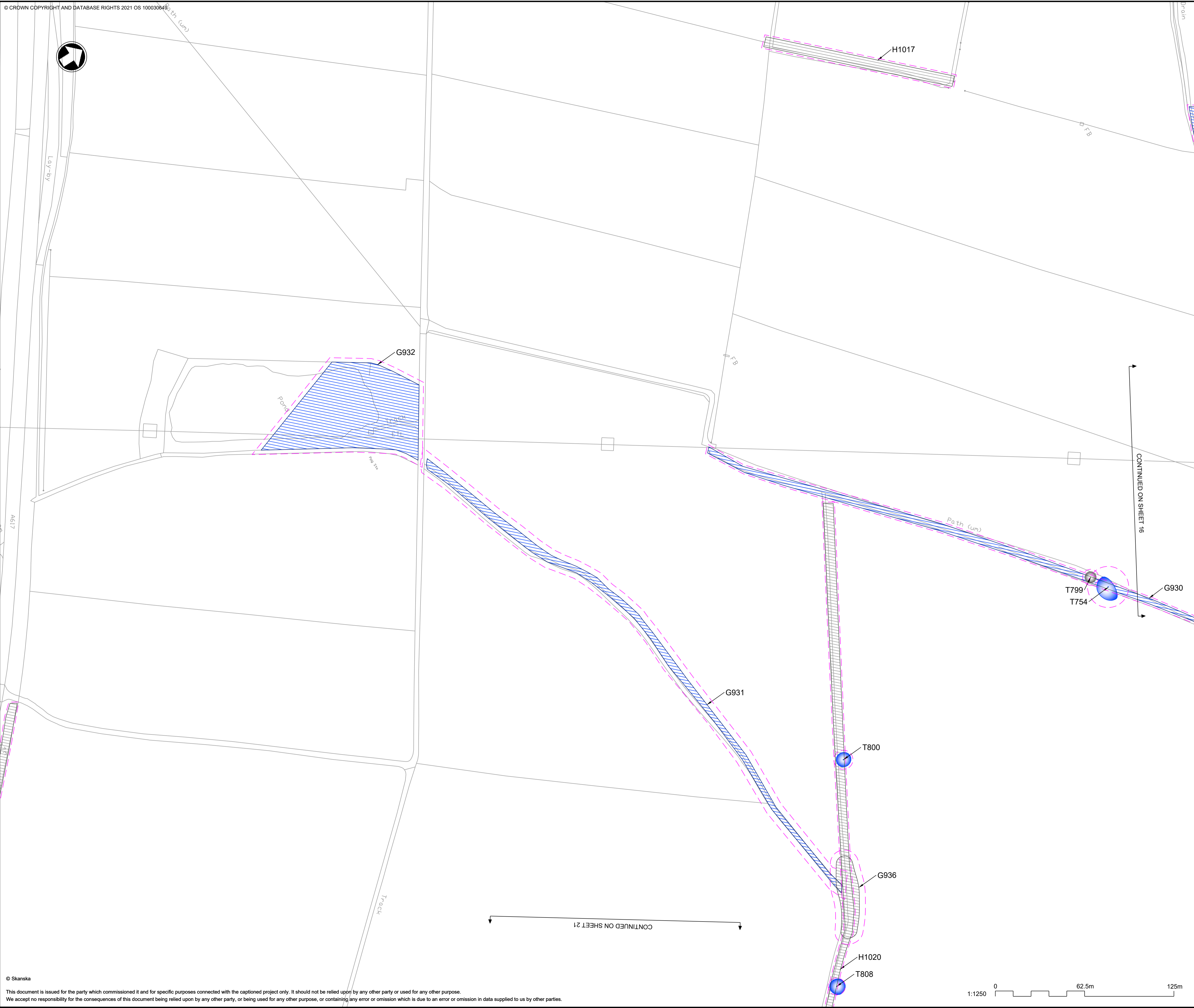
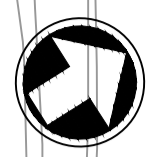
- NOTES**
1. Do not scale from this drawing.
 2. Dimensions are in metres unless stated otherwise.
 3. Arboricultural key symbols are shown on drawing: HE551478-SKAG-ELS-CONWI_CONW-DR-LS-30200.
 4. To be read in conjunction with the Arboricultural Impact Assessment (TR010065/APP/6.3), the Environmental Statement (TR010065/APP/6.1) and the Draft DCO (TR010065/APP/3.1).



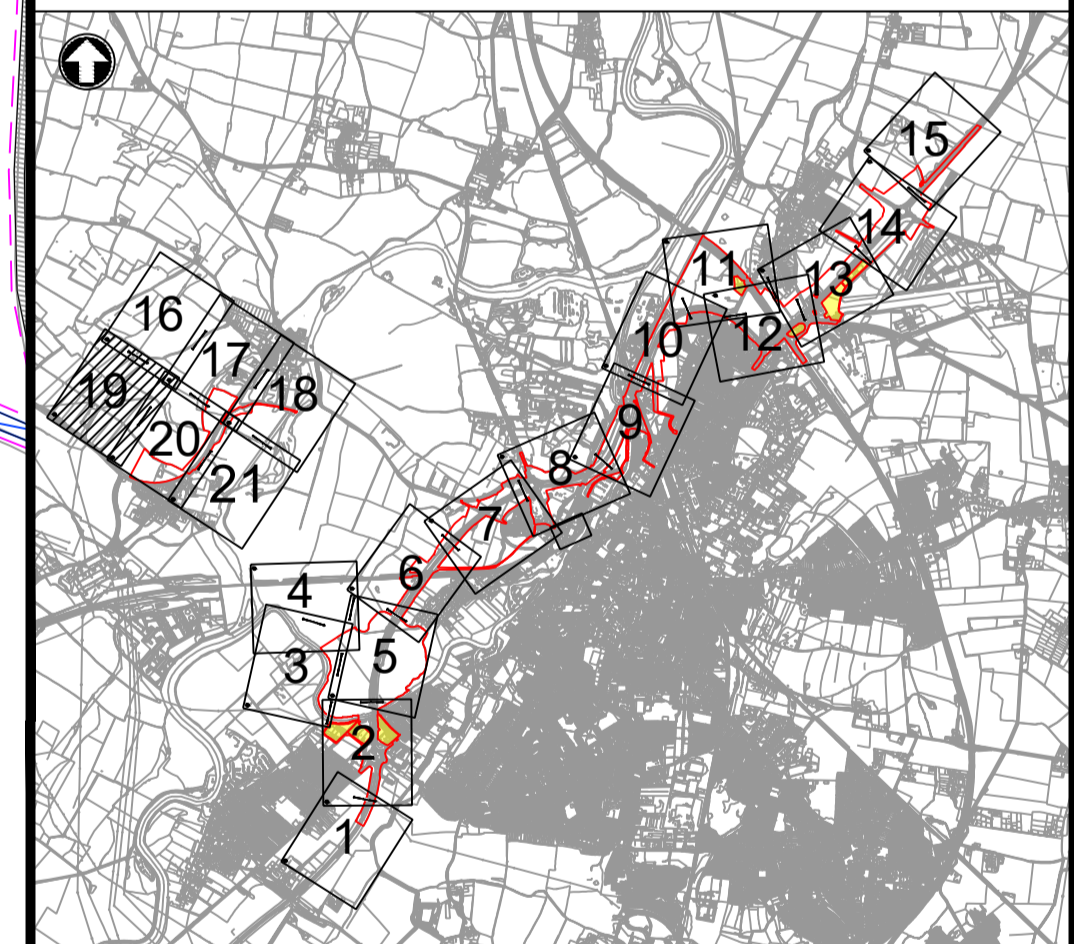
C01	15/02/24	DCO APPLICATION	DL	RL	HF
REV.	DATE	AMENDMENT DETAILS	ORIG	CHK'D	APP'D

PURPOSE OF ISSUE			
DCO APPLICATION			
DEVELOPMENT CONSENT ORDER NUMBER			
TR010065			
PROJECT TITLE			
A46 NEWARK BYPASS			
DRAWING TITLE			
Appendix E.2 Tree Protection Plan Sheet 17 of 21			
ORIGINAL SIZE	SCALE		
A1	1:1250		
DRAWING NUMBER	ORIGINATOR	VOLUME	PROJECT REF NO.
HE551478	SKAG	ELS	HE551478
CONWI_CONW	DR	LS	REVISION
LOCATION	TYPE	ROLE	NUMBER
			C01





- NOTES**
1. Do not scale from this drawing.
 2. Dimensions are in metres unless stated otherwise.
 3. Arboricultural key symbols are shown on drawing: HE551478-SKAG-ELS-CONWI_CONW-DR-LS-30200.
 4. To be read in conjunction with the Arboricultural Impact Assessment (TR010065/APP/6.3), the Environmental Statement (TR010065/APP/6.1) and the Draft DCO (TR010065/APP/3.1).



C01	15/02/24	DCO APPLICATION	DL	RL	HF
REV.	DATE	AMENDMENT DETAILS	ORIG	CHK'D	APP'D

CLIENT
 national highways

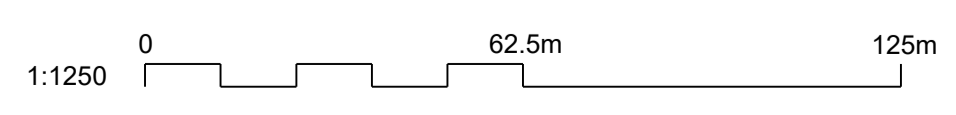
PURPOSE OF ISSUE
 DCO APPLICATION

DEVELOPMENT CONSENT ORDER NUMBER
 TR010065

PROJECT TITLE
 A46 NEWARK BYPASS

DRAWING TITLE
 Appendix E.2
 Tree Protection Plan
 Sheet 19 of 21

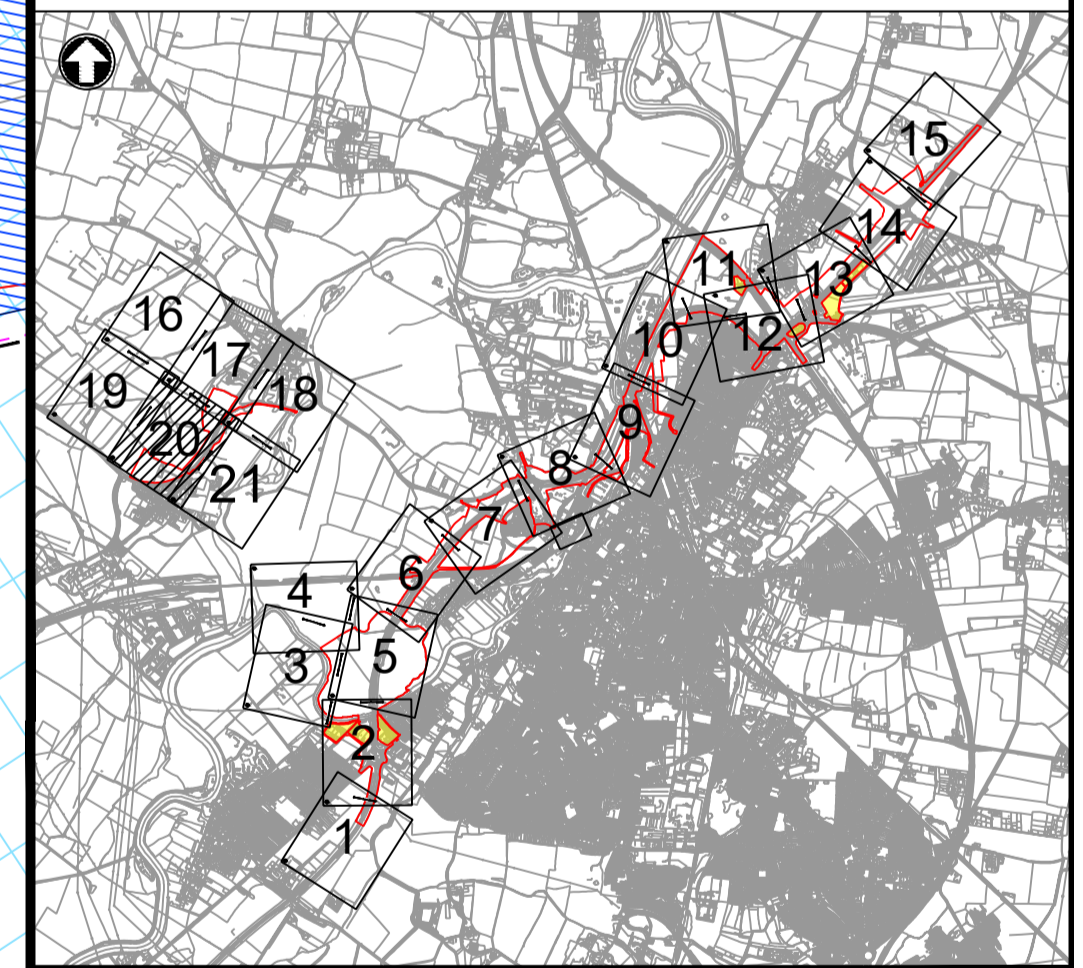
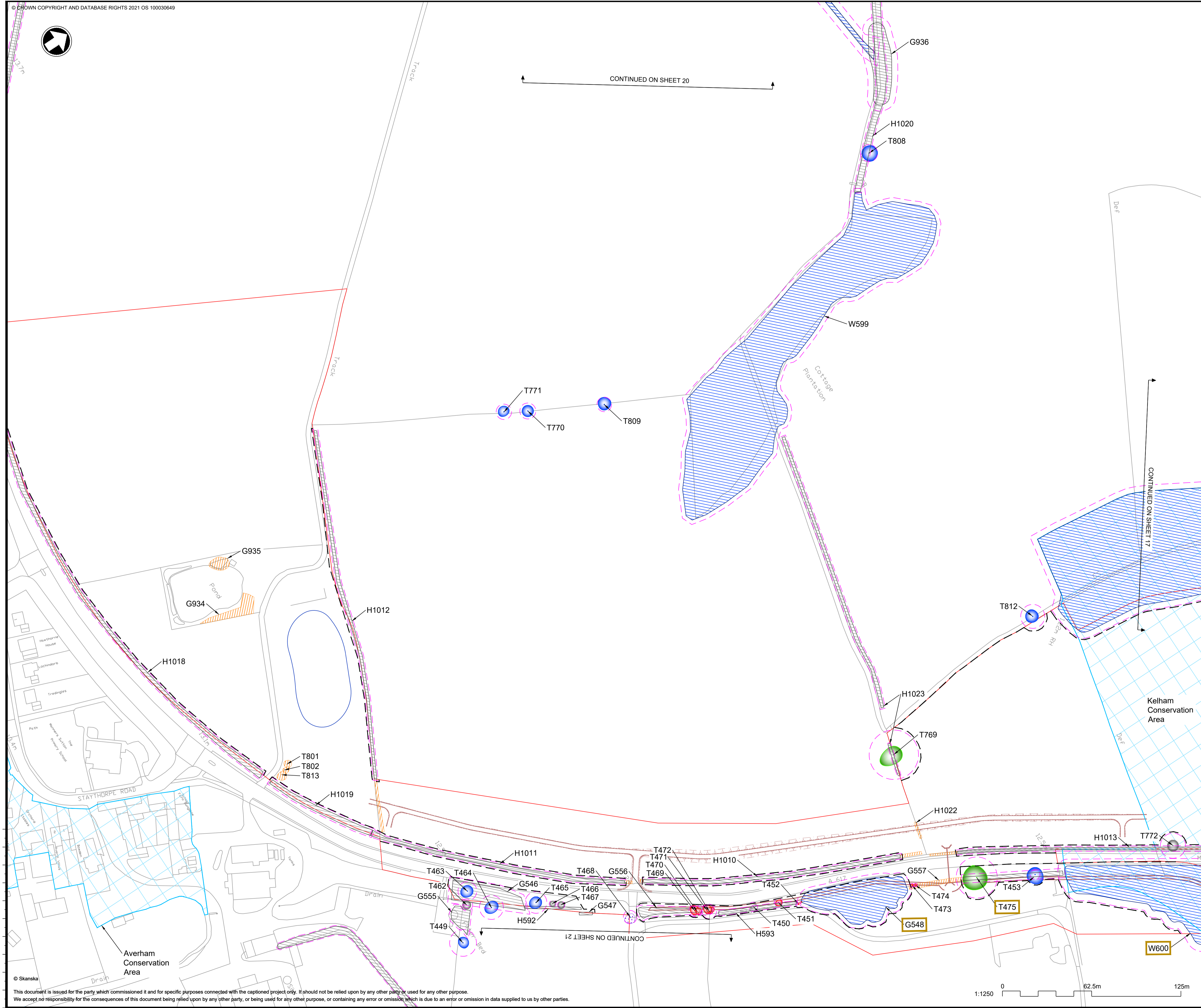
ORIGINAL SIZE	A1	SCALE	1:1250	PROJECT REF NO.	HE551478
DRAWING NUMBER	HE PIN	ORIGINATOR	VOLUME	REVISION	C01
HE551478	SKAG	ELS	30219		
CONWI_CONW	DR	LS	30219		
LOCATION	TYPE	ROLE	NUMBER		





CONTINUED ON SHEET 20

- NOTES**
1. Do not scale from this drawing.
 2. Dimensions are in metres unless stated otherwise.
 3. Arboricultural key symbols are shown on drawing: HE551478-SKAG-ELS-CONWI_CONW-DR-LS-30200.
 4. To be read in conjunction with the Arboricultural Impact Assessment (TR010065/APP/6.3), the Environmental Statement (TR010065/APP/6.1) and the Draft DCO (TR010065/APP/3.1).



C01	15/02/24	DCO APPLICATION	DL	RL	HF
REV.	DATE	AMENDMENT DETAILS	ORIG	CHK'D	APP'D

CLIENT

PURPOSE OF ISSUE
 DCO APPLICATION

DEVELOPMENT CONSENT ORDER NUMBER
 TR010065

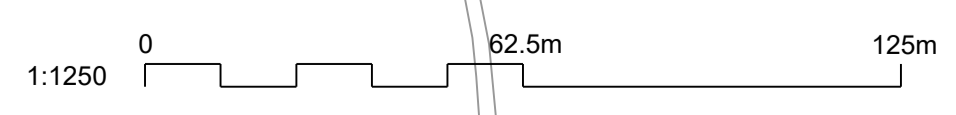
PROJECT TITLE
 A46 NEWARK BYPASS

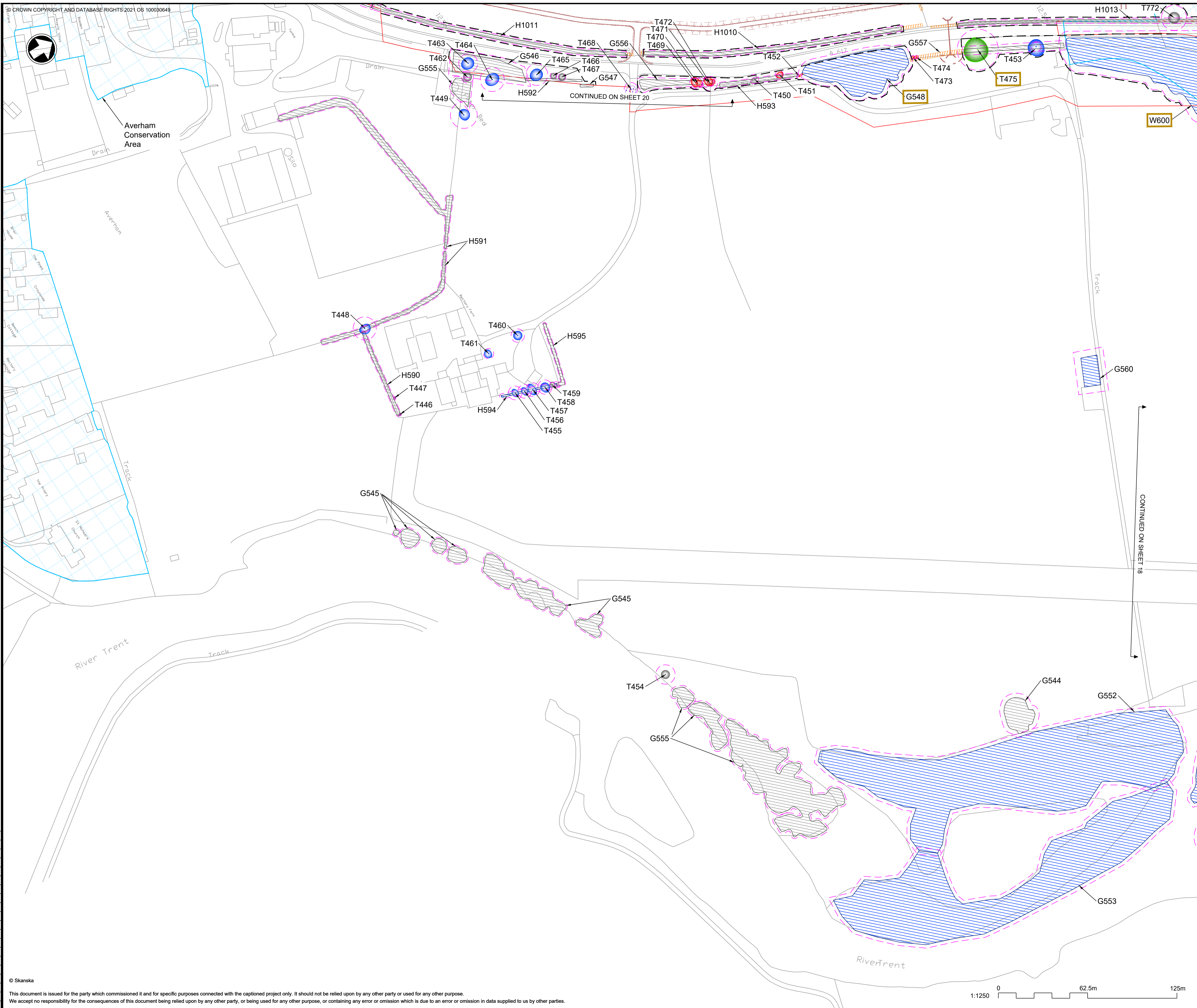
DRAWING TITLE
 Appendix E.2
 Tree Protection Plan
 Sheet 20 of 21

ORIGINAL SIZE	A1	SCALE	1:1250
---------------	----	-------	--------

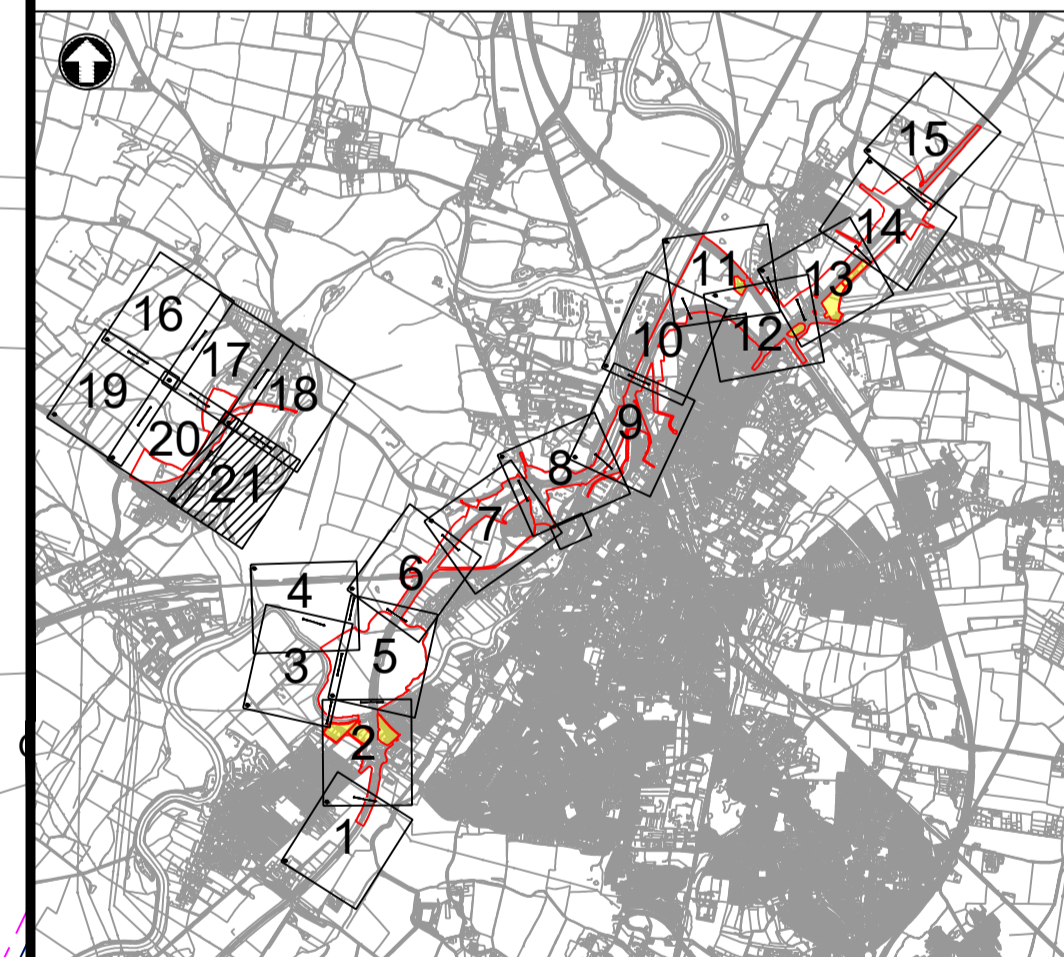
DRAWING NUMBER	ORIGINATOR	VOLUME	PROJECT REF NO.
HE551478	SKAG	ELS	HE551478
CONWI_CONW	DR	LS	30220
LOCATION	TYPE	ROLE	NUMBER
			C01

This document is issued for the party which commissioned it and for specific purposes connected with the captioned project only. It should not be relied upon by any other party or used for any other purpose. We accept no responsibility for the consequences of this document being relied upon by any other party, or being used for any other purpose, or containing any error or omission which is due to an error or omission in data supplied to us by other parties.





- NOTES**
1. Do not scale from this drawing.
 2. Dimensions are in metres unless stated otherwise.
 3. Arboricultural key symbols are shown on drawing: HE551478-SKAG-ELS-CONWI_CONW-DR-LS-30200.
 4. To be read in conjunction with the Arboricultural Impact Assessment (TR010065/APP/6.3), the Environmental Statement (TR010065/APP/6.1) and the Draft DCO (TR010065/APP/3.1).



C01	15/02/24	DCO APPLICATION	DL	RL	HF
REV.	DATE	AMENDMENT DETAILS	ORIG	CHK'D	APP'D

CLIENT
 national highways

PURPOSE OF ISSUE
 DCO APPLICATION

DEVELOPMENT CONSENT ORDER NUMBER
 TR010065

PROJECT TITLE
 A46 NEWARK BYPASS

DRAWING TITLE
 Appendix E.2
 Tree Protection Plan
 Sheet 21 of 21

ORIGINAL SIZE A1	SCALE 1:1250	PROJECT REF NO. HE551478
DRAWING NUMBER HE551478	ORIGINATOR SKAG	VOLUME ELS
CONWI_CONW	DR LS	30221
LOCATION	TYPE	ROLE
		NUMBER
		REVISION C01

